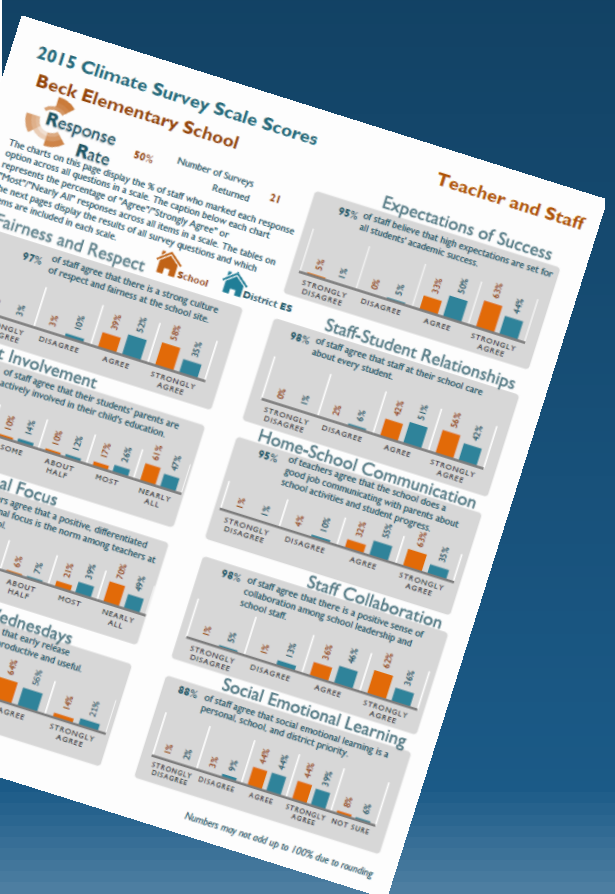
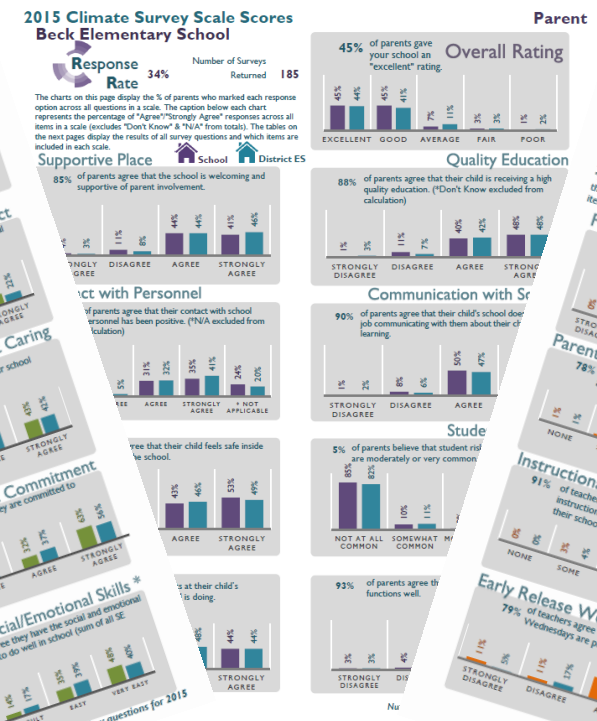


# WCSD School Climate Surveys



Climate Engagement Safety Relationships

# Favorite vs. Least Favorite Store

- Green Stickie: What's your **favorite** store?
  - How are you treated, what does the building feel and look like?
- Orange Stickie: What's your **least favorite** store?
  - How are you treated, what does the building feel and look like?

Share with a partner when you're done!



# School Climate

Talk at your table:

- In a school with a positive climate...
  - How do people treat each other, how do students act, what does the building feel and look like?
- In a school with a negative climate...
  - How do people treat each other, how do students act, what does the building feel and look like?



# Climate Survey Background

- Students in grades 5 – 9 and 11
  - Climate Survey ( $N = 11,566$ )
  - Safety Survey ( $N = 11,822$ )
  - Online at school
  - 82% response rate
- All school staff in district
  - $N = 3,932$
  - Online
  - 68% response rate

## Did you know?

We have 6 years of data from the three surveys!

All reports available on School Climate Website:  
<http://www.washoeschools.net/Domain/231>



# Climate Survey

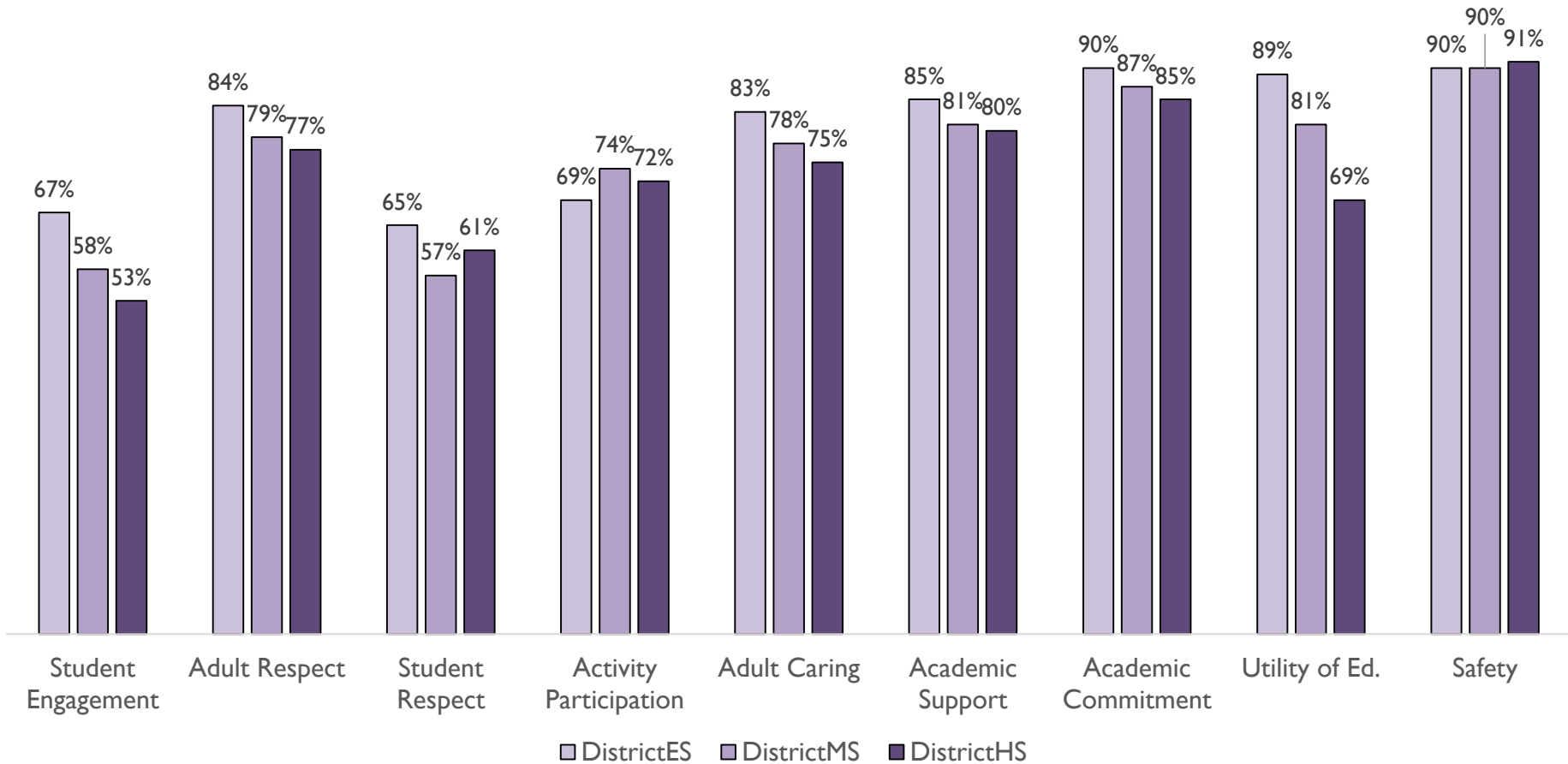
## Student Perceptions of School by School Level



**Washoe County School District**  
Every Child, By Name And Face, To Graduation™



# Percentage of Students Who Agree or Strongly Agree in Each Scale, by School Level



# Sort the Relationship Skills from Easiest to Hardest with 1 = Hardest to Do and 6 = Easiest to Do

\_\_\_\_\_ Introducing myself to a new student at school.

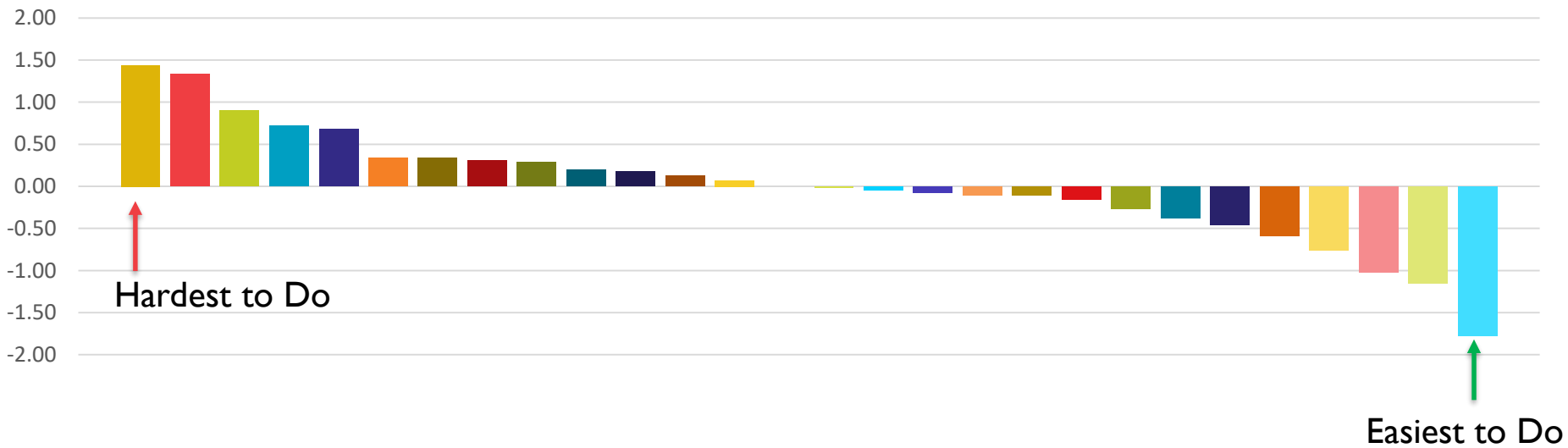
\_\_\_\_\_ Sharing what I am feeling with others.

\_\_\_\_\_ Getting along with my classmates.

\_\_\_\_\_ Being polite to adults.

\_\_\_\_\_ Joining a group I don't usually sit with at lunch.

\_\_\_\_\_ Talking to an adult when I have problems at school.



# Find a Partner

- Describe to partner why you ranked the difficulty of the questions the way you did.
- **After you see answer key:**
  - How did your expectations match (or not match) the answer key?
  - What surprised you?



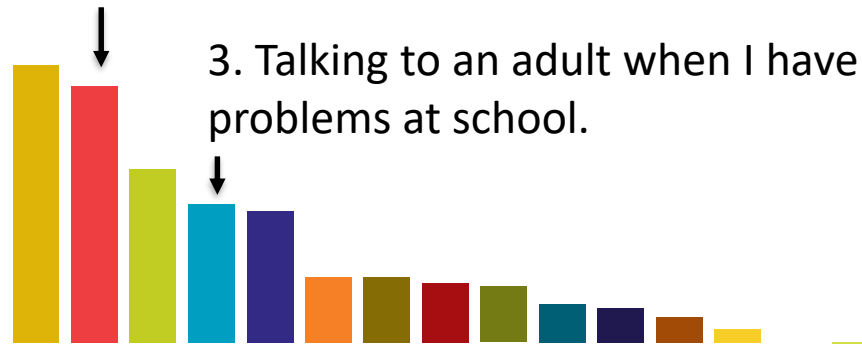


1 = Hardest to Do

6 = Easiest to Do



2. Joining a group I don't usually sit with at lunch.



3. Talking to an adult when I have problems at school.

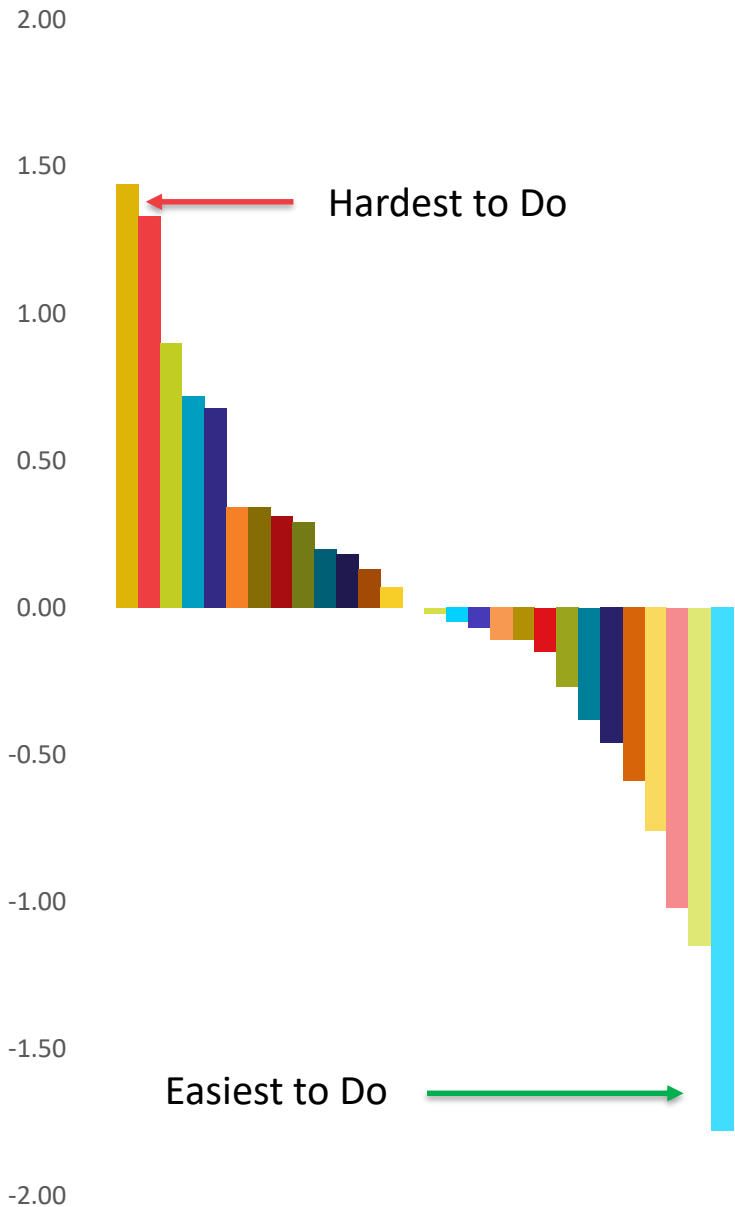
5. Getting along with my classmates.

1. Sharing what I am feeling with others.

4. Introducing myself to a new student at school.

6. Being polite to adults.

# Relationship Skills



- Sharing what I am feeling with others.
- Joining a group I don't usually sit with at lunch.
- Talking to my friends about how I feel when I am upset with them.
- Talking to an adult when I have problems at school.
- Joining a group that is already talking.
- Forgiving myself if I hurt someone's feelings, after I apologize to them.
- Talking to classmates about why they feel a certain way.
- Forgiving classmates when they upset me.
- Working out disagreements on group projects.
- Helping other people solve their disagreements.
- Getting along with others even when I am having a bad day.
- Getting along with classmates even if I disagree with them.
- Stopping myself before I hurt someone's feelings.
- Getting along with adults at school even when we disagree.
- Introducing myself to a new student at school.
- Helping classmates calm down if they're upset.
- Using my skills to make my group better.
- Making friends with people who have different opinions than me.
- Fixing problems I am having with my friends.
- Getting along well with anyone my teacher assigns me to work with.
- Forgiving classmates when they apologize to me.
- Making sure that everyone's ideas are heard in a group.
- Apologizing If I ever upset a classmate.
- Respecting a classmate's opinions during a disagreement.
- Getting along with my classmates.
- Being polite to classmates.
- Getting along with my teachers.
- Being polite to adults.



# Teacher Climate Survey

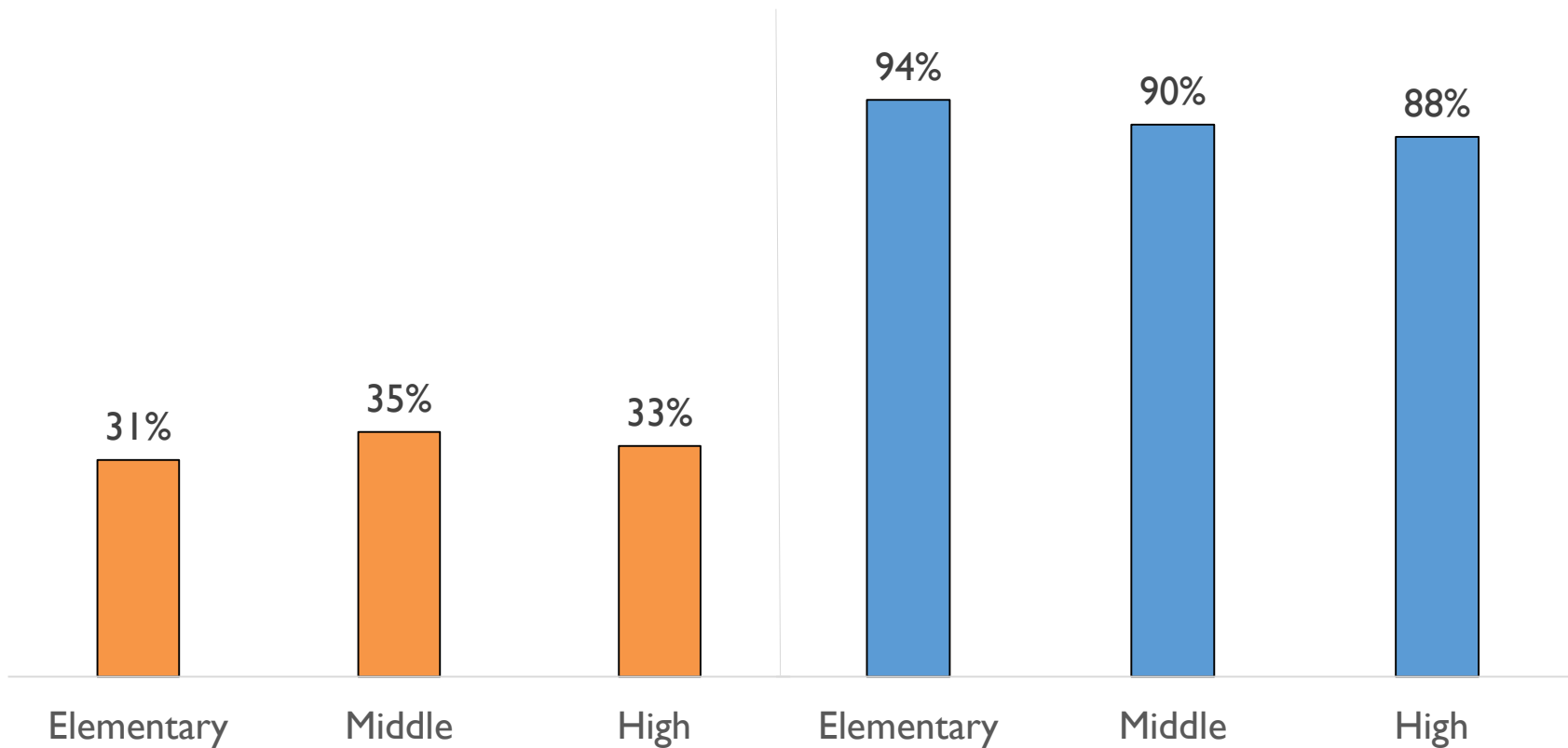
Quiz: What % of middle school teachers say they are stressed and burned out at school?

- a. 75%
- b. 55%
- c. 35%
- d. 15%



Percentage of Teachers Who Agree/Strongly Agree They Have Excessive Work Stress

Percentage of Students Who Agree/Strongly Agree Staff at Their School Really Care about Every Student



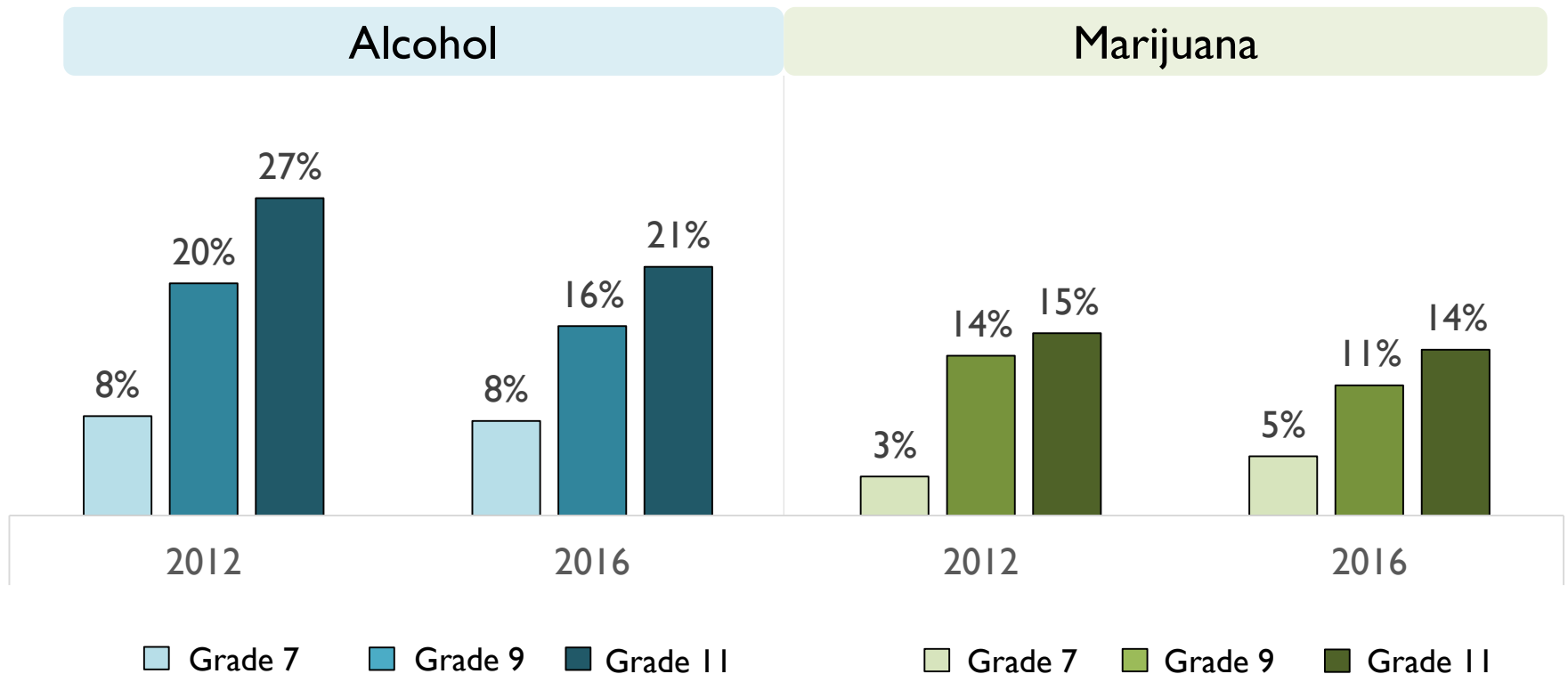
# Student Safety Survey

Quiz: In 2016, what % of 11<sup>th</sup> grade students say they have used alcohol in the past 30 days?

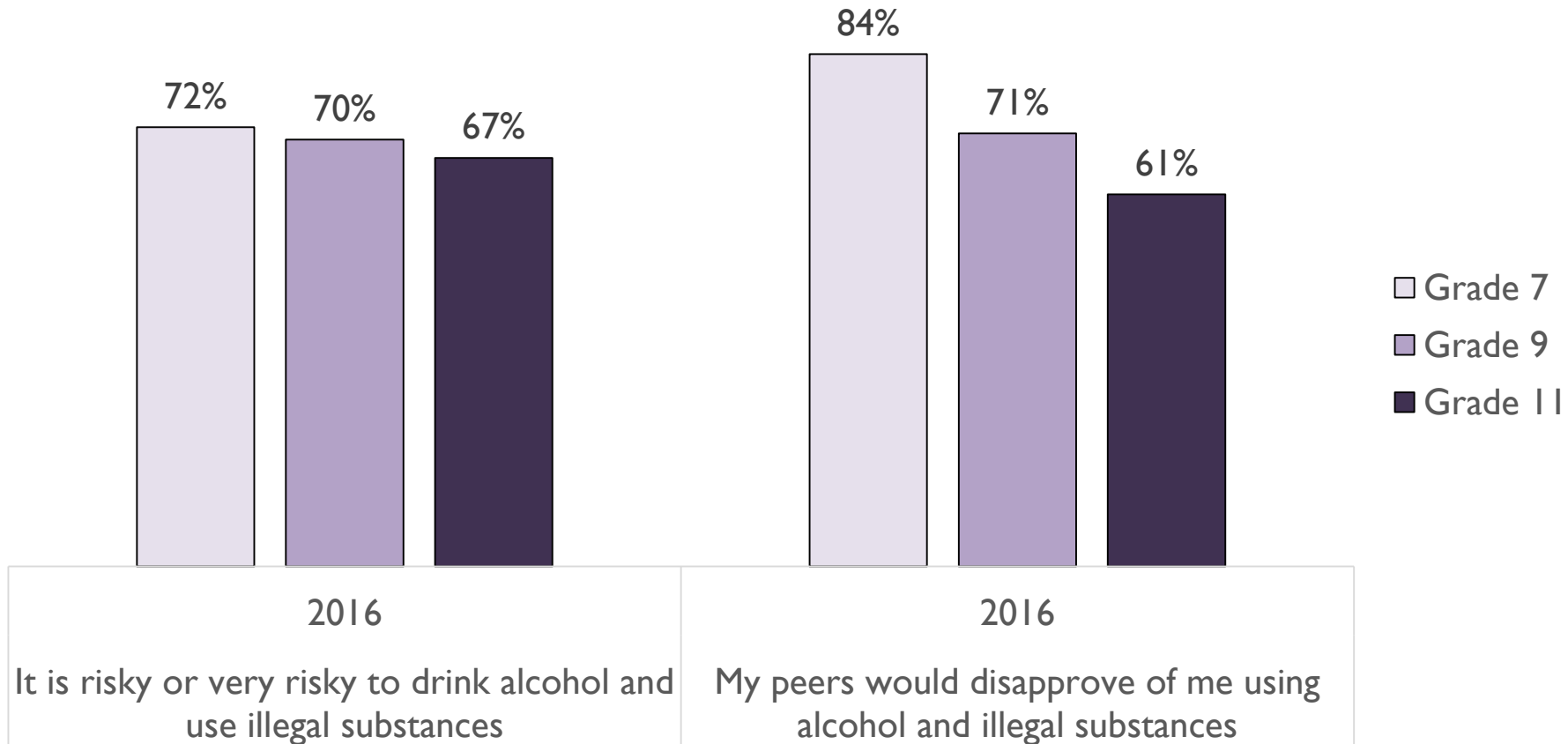
- a. 41%
- b. 31%
- c. 21%
- d. 11%



# Percentage of Students Using Alcohol and Marijuana at Least One Time in Past 30 Days by Grade Level (2012 vs. 2016)



# Percentage of Students Who Believe There Is Risk and Social Disapproval for Using Alcohol and Marijuana



# Y Activity



## Tools for Bringing Student Ideas into School Change



Washoe County School District  
Every Child, By Name And Face, To Graduation™





# Y Does the Data Look This Way?

- Pick a topic:
  - **Decline in Engagement:** Why are students less satisfied with school in middle and high school compared to elementary school?
  - **Relationship Skills:** Why are some relationship skills harder for students and how can we improve them?
  - **Staff:** Why are so many staff feeling work stress and how can students help?
  - **Drug/Alcohol Use:** Why does drug and alcohol use increase in high school?



# Solving the Y

Why does drug and alcohol use increase?

Why is this happening?

What can we do to improve the data?



# Thank you!

Don't forget to check out YOUR school's report online.

<http://www.washoeschools.net/Domain/231>



**Washoe County School District**  
Every Child, By Name And Face, To Graduation™

