



# Winter Activities

## Sixth - Eighth Grade

Hello! Below, you will find links to different learning activities. Explore interesting videos, interactives, video books, virtual field trips, and more!

Please log in to Discovery Education and select each link. You can access the Discovery Education app through Clever.

Questions about your account? Contact Jennifer Moss at [JMoss@discoveryed.com](mailto:JMoss@discoveryed.com).



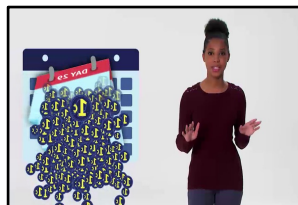
### Financial Literacy Activities



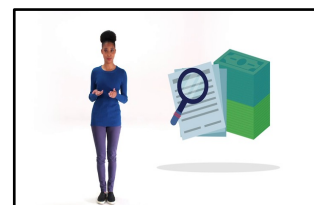
[Budgeting](#)



[What Do You Want to Be When You Grow Up?](#)



[How Can You Get the Most From Your Money?](#)

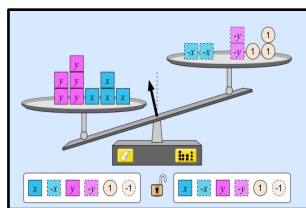


[What is Credit?](#)

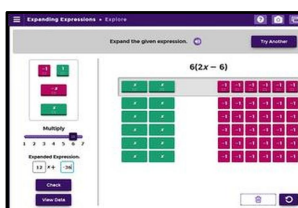
### Interactives



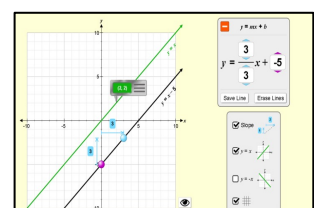
[Proportions](#)



[Equality Explorer](#)



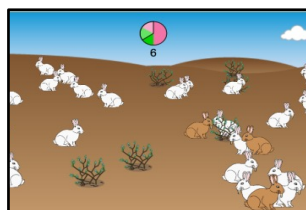
[Expanding Expressions](#)



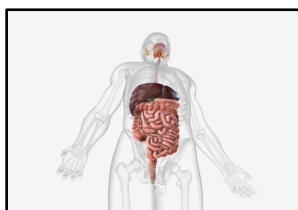
[Graphing Lines](#)



[Discover Mars](#)



[Natural Selection](#)



[3D Human Digestive System](#)



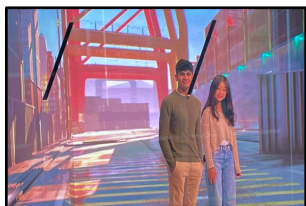
[Taking the Sustainable Way](#)



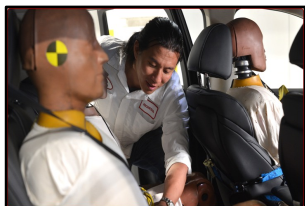
# Winter Activities

## Sixth - Eighth Grade

### Virtual Field Trips



[Bridge to the Future](#)



[Safe Driving](#)

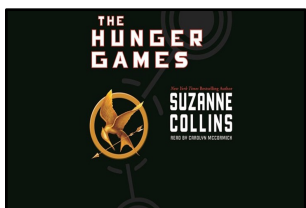


[Discover Your Happy](#)



[American Ideals](#)

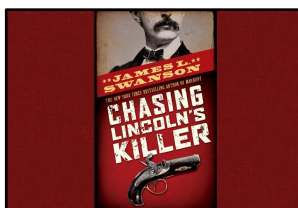
### Audio Books and Podcasts



[Hunger Games](#)



[Little Women](#)



[Chasing Lincoln's  
Killer](#)



[Japanese Fairy  
Tales](#)



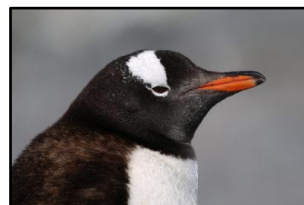
[Preparing for Mars](#)



[What the Ice is  
Telling Us](#)



[Holidays at the  
White House](#)



[I'm a Penguin  
Counter](#)

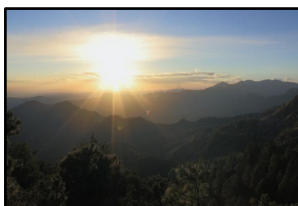
### BYkids Documentaries



[Faith's World](#)



[Poet Against  
Prejudice](#)



[My Beautiful  
Nicaragua](#)



[L'Chaim](#)



# Winter Activities Sixth - Eighth Grade

## Additional Family Activities



[Learning at Home](#)



[STEM Careers](#)



[Inner Explorer](#)



[Cybersafety](#)

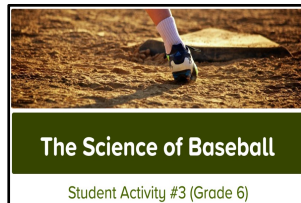
## Sixth Grade Lessons



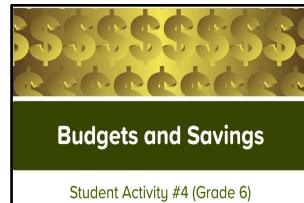
[Scavenger Hunt](#)



[Explore Space](#)

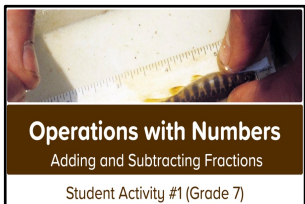


[Science of Baseball](#)

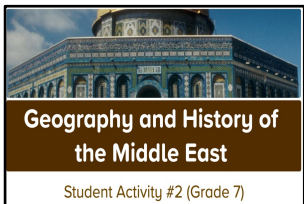


[Budgets&Savings](#)

## Seventh Grade Lessons



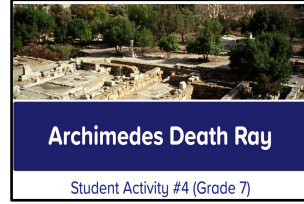
[Adding & Subtracting Fractions](#)



[Middle East](#)

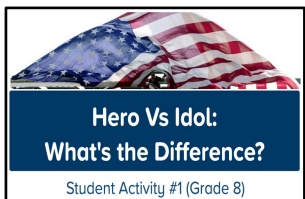


[Myths in Space](#)

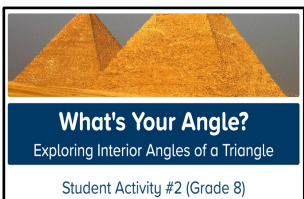


[Archimedes](#)

## Eighth Grade Lessons



[Hero vs. Idol](#)



[What's Your Angle?](#)



[STEM Careers](#)



[Mixtures](#)

## Tools to Support All Learners

### Immersive Reader within Studio Lessons and Choice Boards

Lessons built in Studio become instantly accessible for all students by integrating Microsoft's Immersive Reader tool. Students can use the read-aloud and language translation features to digest the information and the line focus tool for literacy support.

**[LEARN MORE ABOUT IMMERSIVE READER.](#)**

### Closed Caption and Transcripts

Discovery Education features videos with closed captions and transcripts that support students more. Closed caption and video transcript features provide an additional modality of print text when paired with a video's visuals and audio. The settings for closed captions can be adjusted to modify text color, background color, and font size. Transcripts provide support similar to closed captioning but are searchable for specific vocabulary.

**[LEARN MORE ABOUT CLOSED CAPTIONS AND TRANSCRIPTS.](#)**

